

4 BHK +
Personal Gym +
Steam & Sauna +
Attendant Room

FITNESS CHALET
(Fully Furnished Triplex Villa)

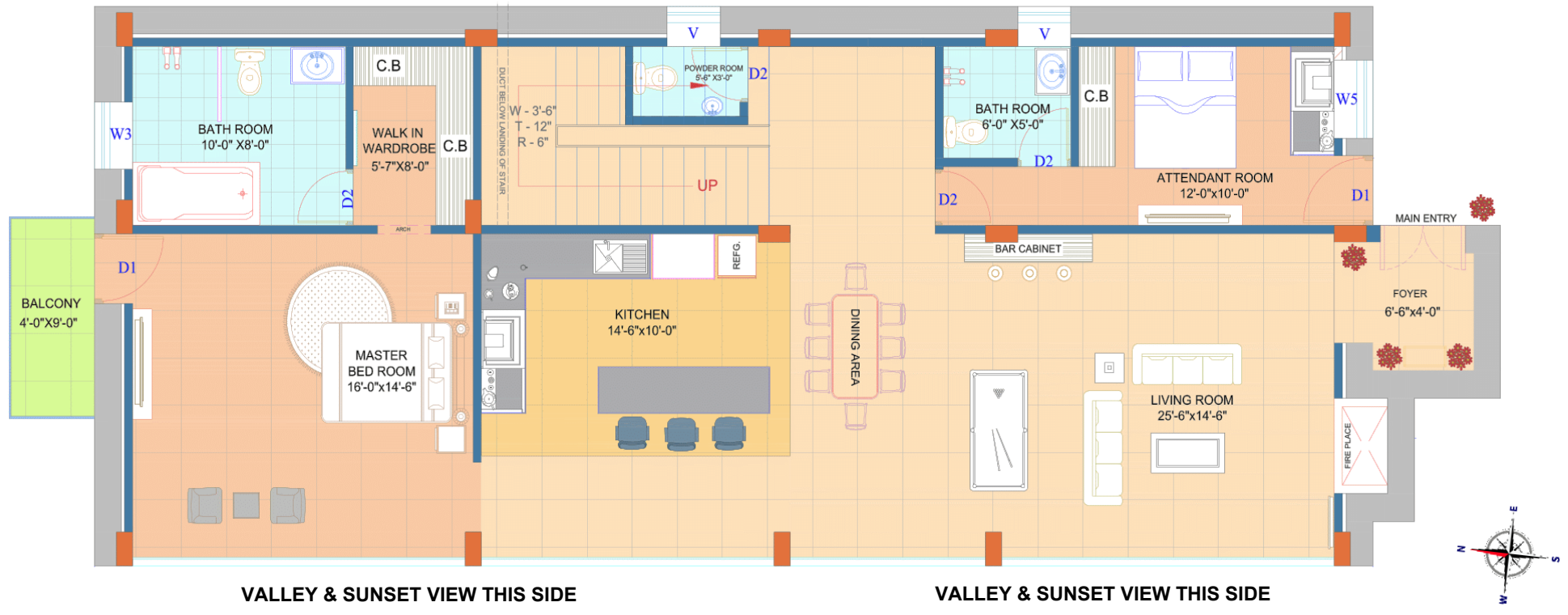
Size : 4500 sq.ft.



Stay active and indulge in nature at this perfect escape for luxury, wellness & unforgettable experiences. Featuring a personal gym, steam & sauna, and valley views.

FITNESS CHALET – FLOOR PLAN (TRIPLEX)

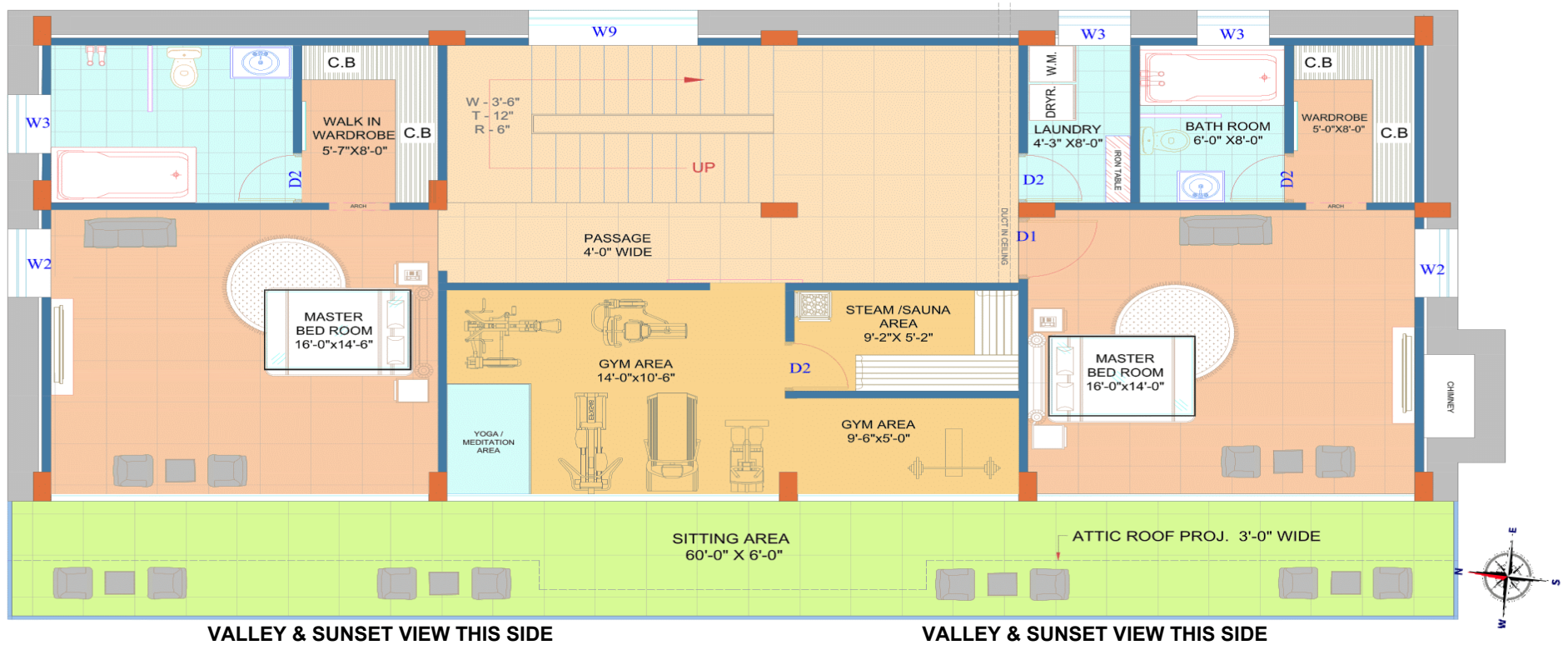
Ground Floor



HIGH POINTS: GROUND FLOOR

- 100% of villa is valley-facing with Maximized Scenic Exposure
- Every bedroom, living room, and even kitchen offers the largest valley-facing views
- Create warm, memorable moments in your dedicated cozy fireplace space
- Host in style with a dedicated bar and snooker area, designed for unforgettable evenings
- The east-facing Vastu friendly entryway invites positivity and prosperity into your home
- The entrance features a foyer designed to ensure that no visitor at the door can view your living room, maintaining complete privacy
- The Efficient Productive Triangle layout in the kitchen saves time and enhances functionality
- A dedicated two-person attendant room ensures enhanced comfort and convenience for your daily living
- Round-edged shelves combine modern aesthetics with child-friendly safety

FITNESS CHALET – FLOOR PLAN (TRIPLEX)

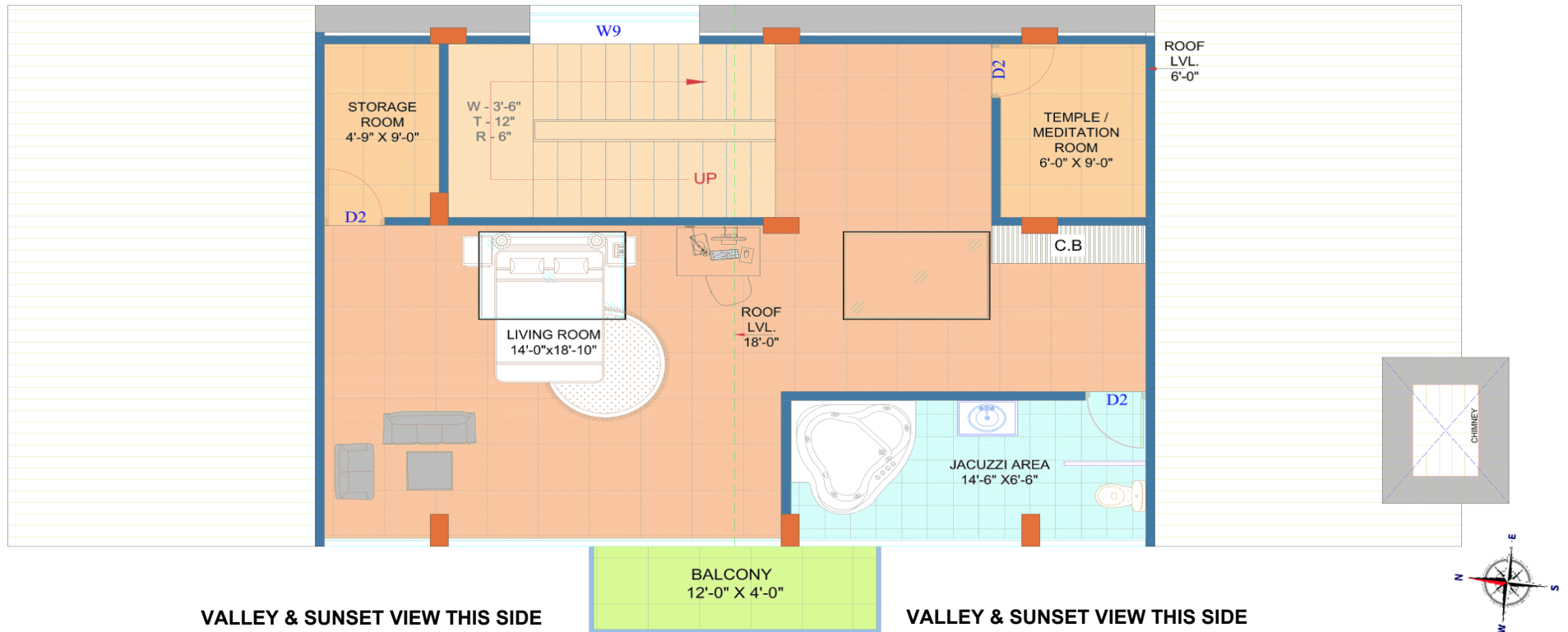


HIGH POINTS: FIRST FLOOR

- Elevate your senses with a state-of-the-art gym, rejuvenating steam & sauna, and a peaceful meditation space—crafted for those who seek wellness in the lap of nature
- A massive 60-ft running deck, one of Himachal’s largest, provides the perfect outdoor lounging space
- Panoramic Glass Façade from bottom-to-top glass design guarantees an uninterrupted view of the majestic valley
- One of the rare floor plans featuring three master size bedrooms, perfect for ultimate comfort and hosting guests
- The rectangular layout ensures efficient use of space, balancing elegance and practicality
- Every bedroom boasts a spacious spa-like bathroom, offering luxury and privacy
- Be the first to enjoy all rooms walk-in wardrobes in the region, designed for your convenience and style
- Thoughtful details like charger points on both sides of the bed and two-way switches for your convenience redefine ease of living

FITNESS CHALET – FLOOR PLAN (TRIPLEX)

Second Floor



HIGH POINTS: SECOND FLOOR

- A dedicated suite at the top provides the ultimate retreat, blending luxury with tranquillity.
- Relax in a closed hot Jacuzzi with a breathtaking valley view—the perfect escape
- An open-to-sky glass roof opening at the top allows you to marvel at the Milky Way with the naked eye—a truly magical experience.